

MONTHLY MEMBERSHIP PROGRESS REPORT

LOCATION ALASKA

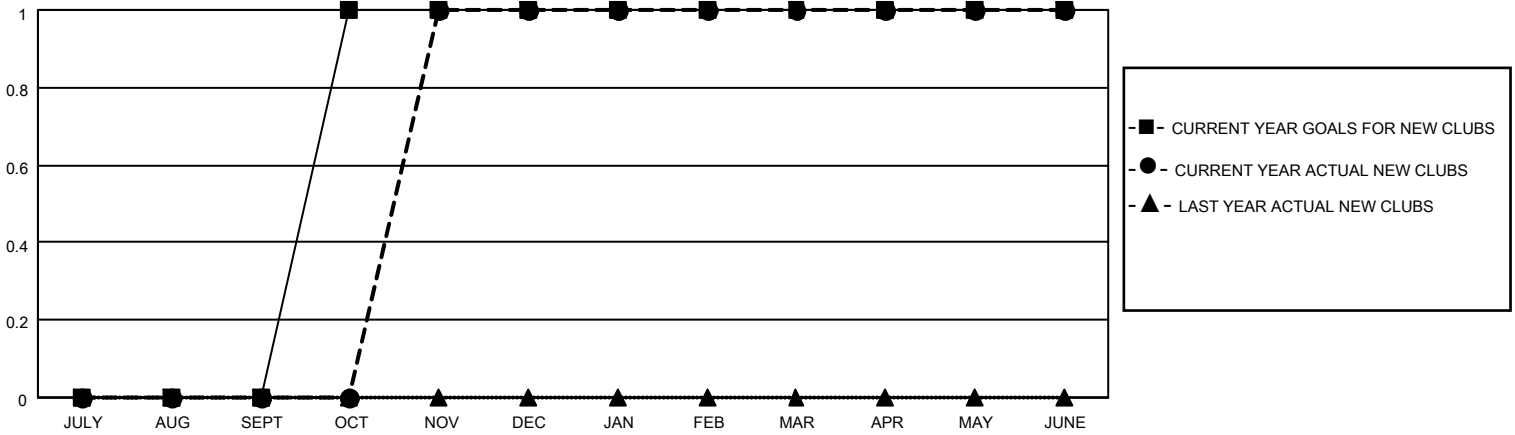
District 49 A

Results as of: 6/30/2022

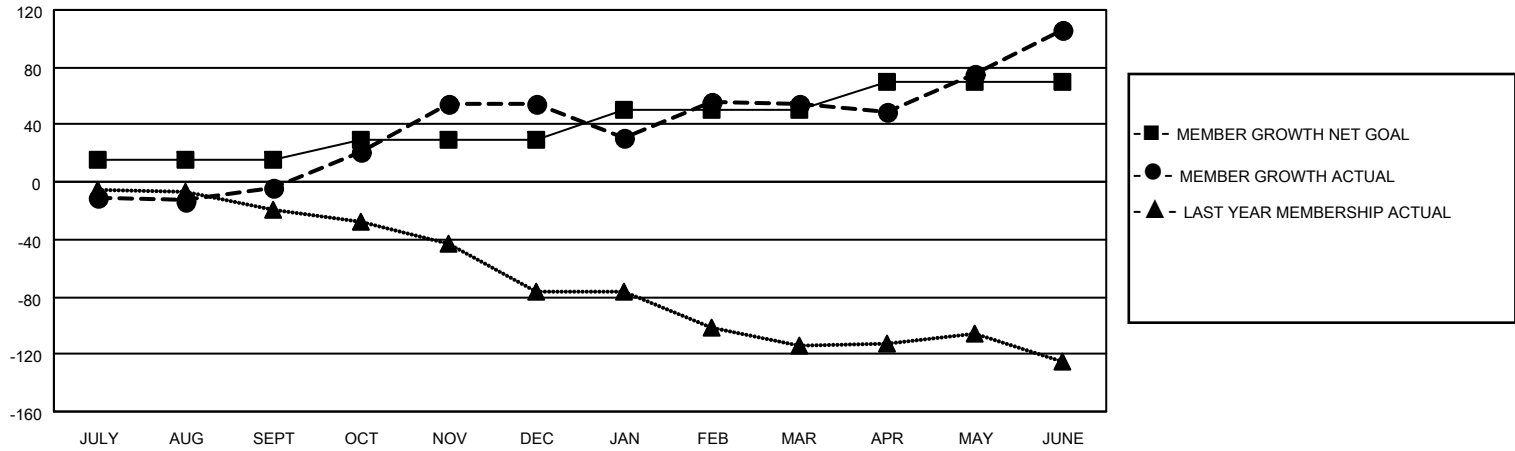
Clubs			
RESULTS FOR 2021-2022			
QUARTER	NEW CLUB GOAL	NEW CLUBS	DROPPED CLUBS
JULY/AUG/SEPT	0	0	1
OCT/NOV/DEC	1	1	0
JAN/FEB/MAR	0	0	0
APR/MAY/JUNE	0	0	0

Members			
RESULTS FOR 2021-2022			
QUARTER	MEMBER GROWTH NET GOAL	MEMBER GROWTH ACTUAL	DROPPED MEMBERS ACTUAL (including transfers)
JULY/AUG/SEPT	15	59	47
OCT/NOV/DEC	15	90	29
JAN/FEB/MAR	20	98	96
APR/MAY/JUNE	20	128	67

GOALS AND ACTUAL NEW CLUBS CUMULATIVE



GOALS AND ACTUAL MEMBERS CUMULATIVE



DROPPED CLUBS: 1

21 CLUBS OF 34 ADDED 1 OR MORE NEW MEMBERS

GENDER DISTRIBUTION

MALE	718 (57.86%)
FEMALE	512 (41.26%)
NON BINARY	0 (0.00%)
PREFER NOT TO ANSWER	11 (0.89%)

DROPPED MEMBERS

[CLICK HERE FOR CUMULATIVE MEMBERSHIP DATA](#)

DECEASED	14
CLUB CANCELLED	0
OTHER	225
TOTAL	239

TOTAL FAMILY UNIT MEMBERS 277

FAMILY MEMBERS PAYING HALF DUES 146